

OLD MARSH GOLF CLUB
SHEET 9 OF 14
APRIL, 1987

NOTES:

- SET PERMANENT REFERENCE MONUMENT (P.R.M.)
- PERMANENT CONTROL POINT (P.C.P.)

BEARING BASE:
THE EAST LINE OF SECTION 33 IS TAKEN TO BE S 01°08'15" W, AND ALL OTHER BEARINGS ARE RELATIVE THERETO.

THE BUILDING SETBACKS SHALL CONFORM TO PALM BEACH COUNTY ZONING CODE.

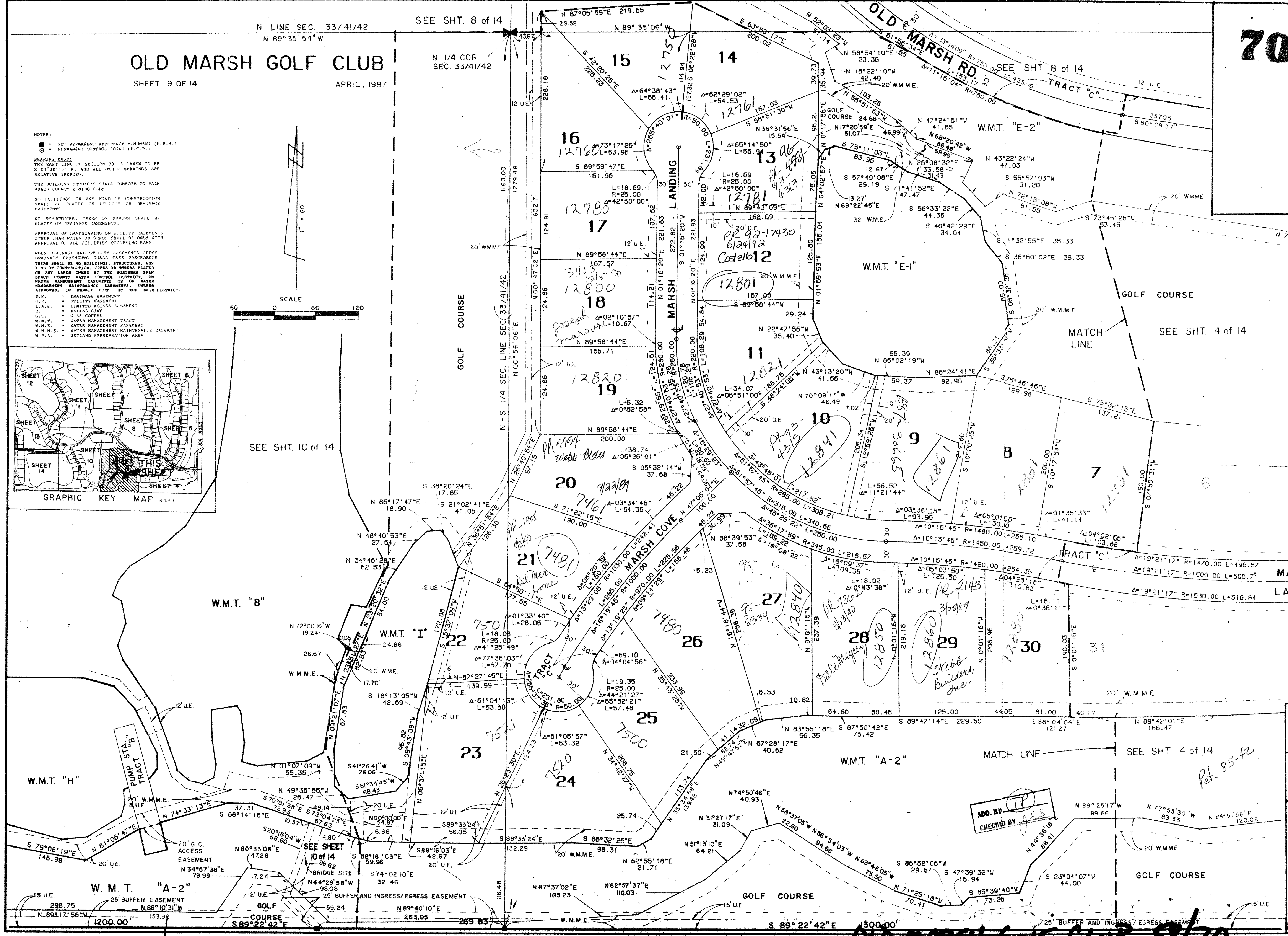
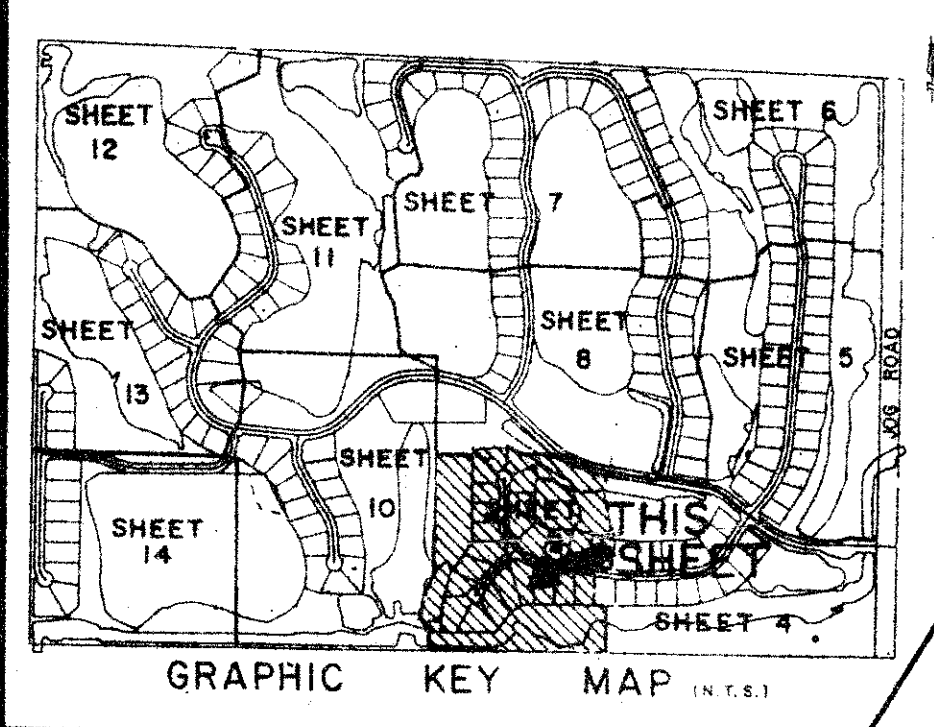
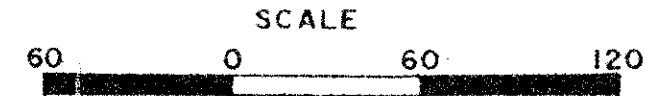
NO BUILDINGS OR ANY KIND OF CONSTRUCTION SHALL BE PLACED ON UTILITY OR DRAINAGE EASEMENTS.

NO STRUCTURES, TREES OR SHRUBS SHALL BE PLACED ON DRAINAGE EASEMENTS.

APPROVAL OF LANDSCAPING ON UTILITY EASEMENTS OTHER THAN WATER OR SEWER SHALL BE ONLY WITH APPROVAL OF ALL UTILITIES OCCUPYING SAME.

WHEN DRAINAGE AND UTILITY EASEMENTS CROSS, DRAINAGE EASEMENTS SHALL TAKE PRECEDENCE. THERE SHALL BE NO BUILDINGS, STRUCTURES, ANY KIND OF CONSTRUCTION, TREES OR SHRUBS PLACED ON ANY LAND OWNED BY THE SOUTHERN PALM BEACH COUNTY WATER CONTROL DISTRICT, OR WATER MANAGEMENT EASEMENTS OR WATER MANAGEMENT MAINTENANCE EASEMENTS, UNLESS APPROVED, IN PERMIT FORM, BY THE SAID DISTRICT.

D.E. = DRAINAGE EASEMENT
U.E. = UTILITY EASEMENT
L.A.E. = LIMITED ACCESS EASEMENT
R. = RADIAL LINE
G.C. = GOLF COURSE
W.M.T. = WATER MANAGEMENT TRACT
W.M.E. = WATER MANAGEMENT EASEMENT
W.M.H.E. = WATER MANAGEMENT MAINTENANCE EASEMENT
W.P.A. = WETLAND PRESERVATION AREA



28-35/11/42
SUBDIVISION * Old Marsh G.C.
BOOK 58 PAGE 70
FLOOD ZONE B
QUAD # 42
SE PUD
PUD NAME
TAX 797

ADD. BY [Signature]
CHECKED BY [Signature]

OLD MARSH GOLF CLUB SHEET 9 OF 14

MANAHL, BROWNING, FERRARI & HELSTROM, INC.
CONSULTING ENGINEERS, PLANNERS & SURVEYORS
1501 S. PALM BEACH BLVD., SUITE 200
PALM BEACH, FLORIDA 33480
PHONE (407) 851-1111
FAX (407) 851-1112